

INFOPRINT PRO 907EX, INFOPRINT PRO 1107EX, INFOPRINT PRO 1357EX

HIGHLIGHTS

- Offers print speeds up to 90, 110 or 135 ipm¹
- Boosts productivity with a duty cycle up to 1.9 million images per month²
- Provides robust media support, including labels, coated and pre-punched stocks, up to 13" x 19.2" and SRA3 for creating complex documents like books and manuals
- Delivers multifunction capabilities: up to 1,200 x 1,200 dpi copying, printing and scanning
- Enables long uninterrupted runs with high-capacity input and output
- Enhances processing performance with a powerful EFI Fiery EB-1357 external server option³
- Offers multiple inline finishing choices and high-capacity stacking options
- Eases integration with multiple datastream support: PS/PDF, PCL and native InfoPrint Intelligent Printer Datastream™ (IPDS™)



InfoPrint Pro 907EX featuring 7 input sources and booklet finishing capabilities

TAKE BACK CONTROL OF YOUR OUTPUT

Every time you outsource a job you lose control of it. And this means you may lose control of costs and customer satisfaction. The InfoPrint Pro 907EX, InfoPrint Pro 1107EX and InfoPrint Pro 1357EX family can help you keep jobs in-house with versatile edit functions, hard-copy capture, robust inline finishing and support for multiple workflows and datastreams.

The addition of new output capabilities can expand your production catalog. With complex job creation and manipulation workflow tools, you can seamlessly support

professional inline finishing options, including multiple binding options, booklet making, stacking, punching, folding and trimming. Easily create simple direct mail pieces, or more complex, bound, multi-section manuals with tabs and covers. Whether you manage an in-plant, service bureau, commercial print, direct mail or data center, choose the workflow and finishing capabilities you need today and add modules as your business grows.

InfoPrint Solutions Company can help you do more with less in a converged in-plant and data center environment. With support for native InfoPrint IPDS, PostScript® 3™, PCL5e/6 and PDF, you can control these traditional output environments while one device shares the

workload. Even better, you can consolidate maintenance fees and operator costs that used to be independently charged to different departments. InfoPrint can offer a price/performance mix that can satisfy both in-plant and production requirements. Achieve even more control with lock and key security on the high-capacity input trays and stackers, protecting sensitive stocks like preprinted checks.

Move up to a solution that can give you back the control.

OPTIMIZE PRODUCTIVITY

Given today's competitive marketplace, you need to maximize productivity to maximize profits. The InfoPrint Pro 907EX, InfoPrint Pro 1107EX and InfoPrint Pro 1357EX family can deliver high speed, high duty cycle production designed to maximize throughput by minimizing downtime and stoppages.

Keep jobs flowing and shorten your turnaround time significantly with print speeds of up to 135 images per minute¹ and duplexing at full engine speed. Designed for superior durability, engine duty cycles of up to 1.9 million images per month² can improve your capability to process jobs as they are received. The large 10.4" Super VGA color touch screen display is easy to

read and navigate, and it displays animated guidance screens to direct operators through paper jams, error correction and toner refills.

Technology enhancements, such as the ultrasonic multi-feed detection sensor, can allow operators to focus on efficiency. Trained customer replacement units (TCRUs) can help you maximize uptime because you can execute simple maintenance tasks independent of InfoPrint support.

In addition, you can maximize versatility and reduce your dependency on slow manual processes. Take advantage of inline finishing options, including high-capacity stacking, sheet multi-folding, inline GBC and standard punching, multiple saddle stitch options with face trimming, fully automated ring binding and hot melt glue perfect binding with three-face trim. Leverage these inline features to automatically bind books, collateral and manuals.

Move up to a solution that can optimize your productivity.

FULLFILL CUSTOMERS' EXPECTATIONS

Customer satisfaction is the ultimate indicator of a thriving business. Keep your customer satisfaction rating high with the InfoPrint Pro 907EX, InfoPrint Pro 1107EX

and InfoPrint Pro 1357EX family. The printers create professional quality output in a high speed solution that supports extensive media types and weights.

Fulfill a spectrum of customer requests with support for media up to 13" x 19.2" and SRA3 for jobs that range from direct mail to manuals to marketing collateral on demand. Take advantage of high quality, true 1,200 x 1,200 dpi printing for rich blacks and eye-catching grayscales. High speed document production is within reach, even on traditionally difficult-to-feed media, with support for 11 lb. bond to 110 lb. cover (40 – 300 g/m²) media, as well as labels and coated and pre-punched stock.

By providing a common solution that fits your existing workflow, InfoPrint can minimize the impact to your customers. The optional EFI Fiery controller can enable a full PDF workflow designed for seamless integration into environments already in place and performing today. InfoPrint's solution integration services can expedite implementation by providing a range of assistance from simple workflow training to full-blown workflow automation.

Move up to a solution that can fulfill your customers' expectations.



InfoPrint Pro 1357EX featuring high-capacity input, high-capacity stacking and booklet capabilities

INFOPRINT PRO 907EX, INFOPRINT PRO 1107EX AND INFOPRINT PRO 1357EX AT A GLANCE

Item	Specifications
Printer controller³	<p>Standard printer controller:</p> <ul style="list-style-type: none"> • Processor: 1.4GHz Intel Pentium-M • Memory: 1.5GB • Hard disk: 320GB <p>EFI Fiery EB-1357 (System 8, R 2) external printer controller:</p> <ul style="list-style-type: none"> • Processor: 2.0GHz Intel T2500 Core 2 Duo • Memory: 2.0GB • Hard disk: 80GB
Print speed (letter/A4)	<p>InfoPrint Pro 907EX: Up to 90 ipm¹ InfoPrint Pro 1107EX: Up to 110 ipm¹ InfoPrint Pro 1357EX: Up to 135 ipm¹</p>
Copy speed	<p>At ARDF 1-to-1: up to 80 ipm¹ monochrome or color At memory retention (multi-copy): up to maximum print speed</p>
Maximum monthly usage (letter/A4)	<p>InfoPrint Pro 907EX: Up to 1.2 million images per month² InfoPrint Pro 1107EX: Up to 1.5 million images per month² InfoPrint Pro 1357EX: Up to 1.9 million images per month²</p>
Paper handling	
Standard input capacity	<p>3,000 sheets (letter/A4):</p> <ul style="list-style-type: none"> • Tray 1: 2,000 sheets (1,000 x 2 tandem tray) • Tray 2: 500 sheets • Tray 3: 500 sheets
Optional input capacity	<p>Maximum input capacity:</p> <ul style="list-style-type: none"> • 8,050 letter/A4 sheets (with RT5030 and BY5000) • 6,500 ledger/A3 sheets (with RT5040, BY5000 and TK5010)
Output capacity	<p>Maximum output capacity: 10,000 letter/A4 sheets (tandem configuration, 2x SK5010)</p>
Optional input and finishing accessories³	
RT5030 letter/A4 large capacity tray	<p>4,550 sheets (letter/A4):</p> <ul style="list-style-type: none"> • Tray 4: 1,000 sheets • Tray 5: 1,000 sheets • Tray 6: 2,550 sheets
RT5040 ledger/A3 large capacity tray	<p>4,000 sheet (ledger/A3):</p> <ul style="list-style-type: none"> • Tray 4: 1,000 sheets • Tray 5: 2,000 sheets • Tray 6: 1,000 sheets

INFOPRINT PRO 907EX, INFOPRINT PRO 1107EX AND INFOPRINT PRO 1357EX AT A GLANCE

BY5000 multi bypass tray	500-sheets (letter/A4)
TK5010 ledger/A3 tray kit	Converts tray 1 to 1,000 ledger/A3 sheets
DU5000 de-curler unit	5 step adjustment, back curl/face curl, integrated purge tray
SK5010 high-capacity stacker with roll-away cart	5,000 sheet offset stacking with roll-away cart Proof tray: 500 sheets Tandem configuration available Additional roll-away carts available
SR5020 booklet finisher	Shift tray: 2,500 sheet offset stacking (letter/A4) Proof tray: 250 sheets (letter/A4) Staple capacity: 2 to 100 sheets (letter/A4) Saddle stitch capacity: up to 20 sheets (20 lb. bond, 75g/m ²) Optional TR5020 face trim unit Optional PU5020 2/3 or 2/4 or 4-hole punch unit
SR5000 finisher	Shift tray: 3,000 sheet offset stacking (letter/A4) Proof tray: 500 sheets (letter/A4) Staple capacity: 2 to 100 sheets (letter/A4) Optional PU5000 2/3 or 2/4 or 4-hole punch unit
CI5010 cover interposer	400 sheets (200 sheet x 2 trays) (letter/A4)
FD5000 multi folding unit	Supports 6 types of folds (1 – 3 sheets depending on the type of fold): <ul style="list-style-type: none"> • Two-fold, z-fold, tri-fold (in or out), 4-fold (gate fold or double parallel)
RB5000 ring binder	Booklet capacity: 2 – 100 sheets/booklet Ring sizes: 50 sheets, 100 sheets (letter or A4)
GB5000 perfect binder	Sheet capacity: 10 - 200 sheets (20 lb. bond, 75 g/m ²) Standard trimming: 3-edges, 1-edge, none Standard cover feeder: 400-sheet (200-sheet x 2 trays)
GBC StreamPunch III²	Inline punching letter/A4 long edge 7 GBC customer exchangeable die sets
BK5010 booklet maker (Plockmatic)³	Saddle stitch capacity: up to 30 sheets (20 lb. bond, 75g/m ²) Additional options: <ul style="list-style-type: none"> • CF5010 cover feeder unit • TR5010 trimmer unit (face trim) • BF5010 book fold unit (square edge) • BK5010 rail unit (allows off-line operation)
Additional options³	VM card, copy data security unit, data overwrite security unit, file format converter, RB5000 ring cartridge (letter or A4)
Printer media	Standard & custom sizes: 5.5" x 8.5" to 13" x 19.2" (140 x 216 mm to 330.2 x 487.7 mm) <ul style="list-style-type: none"> • Auto-detect standard sizes Weight: from 11 lb. bond to 110 lb. cover (40 – 300 g/m ²) <ul style="list-style-type: none"> • Supported weight varies by input source • Duplex: 14 lb. bond – 95 lb. cover (52 – 256 g/m²) Types: plain paper, recycled, special, color (11 colors), letterhead, label paper, translucent, preprinted, bond paper, card stock, OHP, pre-punched, tab stock, coated paper and some NCR paper

INFOPRINT PRO 907EX, INFOPRINT PRO 1107EX AND INFOPRINT PRO 1357EX AT A GLANCE

Environmental conditions

Temperature: 50 to 90°F (10 to 32°C)
Humidity: 15% to 80% RH
Acoustics (engine, idle/operating):

- InfoPrint Pro 907EX: 60/74 dbA
- InfoPrint Pro 1107EX: 66/76 dbA
- InfoPrint Pro 1357EX: 73.5/78.5 dbA

Communication protocols

Standard printer controller:

- TCP/IP, IPX/SPX, AppleTalk
- Standard interface: Ethernet 10/100BaseTX, USB 2.0
- Optional interface: Gigabit Ethernet

EFI Fiery EB-1357 external printer controller:

- TCP/IP (IPv4, IPv6), AppleTalk
- Standard interface: Ethernet 10/100/1000BaseTX, USB 2.0 (media print)

Print language support

Standard printer controller:

- PCL5e/6 (standard)
- RPCS (Refined Printing Command Stream) (standard)
- PostScript 3 including direct PDF (optional)
- Native InfoPrint IPDS (optional)
- XPS
- LCDS/Metacode (via optional InfoPrint Solutions print servers and transforms)

EFI Fiery EB-1357 external printer controller:

- PostScript 3 including direct PDF (standard)
- PCL6 (standard)
- Variable data print: Fiery FreeForm, PPML2.2, Creo VPS

Utilities supported

Standard printer controller:

- Standard: GW Scan, Web Image Monitor, SmartDeviceMonitor for Admin, SmartDeviceMonitor for Client, DeskTopBinder Lite

EFI Fiery EB-1357 external printer controller:

- Standard: Fiery Scan, GW Scan, Command Work Station (Win/Mac), Fiery Web Tools, Secure Erase, Booklet Maker 4, Mixed Media, Production Print Package, Hot Folders
- Optional: EFI Impose, EFI Compose, FACI option (monitor, keyboard, mouse, furniture and dongle)

Physical characteristics

Engine: 35" x 34" x 54" (870 mm x 859 mm x 1356 mm); Less than 640 lb. (Less than 290 Kg)

Power requirements

Print Engine and attached input/output options:

- North America: 208 – 240 V, 20 A, 50/60 Hz
- Europe: 220 – 240 V, 16 A, 50/60 Hz

Other options may have different power requirements.

Energy-saving capability

Energy Star qualified (InfoPrint Pro 1107EX and InfoPrint Pro 1357EX only), power-saving sleep modes, standard duplex printing, toner saver driver setting, low noise levels, minimal ozone emissions, Restriction of Hazardous Substances (RoHS) compliant, ECP certified, Eco declaration

Warranty

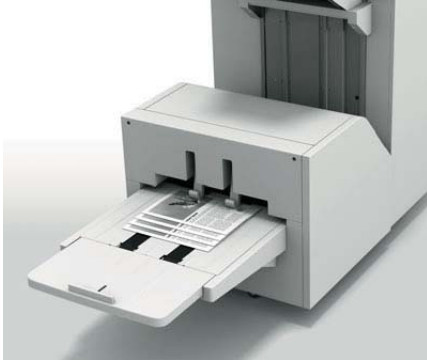
3 months, onsite, 9x5 Next Business Day, break fix only



Fully-automated ring binding



Up to 6,500 sheets of ledger/A3 input



Booklet finisher output with face trim option

FOR MORE INFORMATION

Contact your InfoPrint Solutions Company representative or InfoPrint Solutions Partner or visit:

infoprint.com/cutsheet

© Copyright InfoPrint Solutions Company 2009. All rights reserved.

InfoPrint Solutions Company
6300 Diagonal Highway 002J
Boulder, Colorado 80301-9270
U.S.A.

Printed in the United States of America
June 2009

Ricoh and the Ricoh logo are registered trademarks of Ricoh Co., Ltd. in Japan, other countries or both. IBM and the IBM logo are registered trademarks of International Business Machines Corporation in the United States, other countries, or both. The Ricoh and IBM trademarks are used under license from their respective trademark owners.

InfoPrint Solutions Company is a trademark of InfoPrint Solutions Company, LLC, in the United States, other countries, or both. InfoPrint is a registered trademark of Ricoh Co., Ltd., in the United States, other countries, or both. InfoPrint is used under license from the trademark owner.

References in this publication to InfoPrint Solutions Company products or services do not imply that InfoPrint Solutions Company intends to make them available in all countries in which InfoPrint Solutions Company operates. Any purchase of such products or services will be exclusively governed by the terms of the sales or license agreement applicable to such purchase to the maximum extent allowed by law.

These terms are trademarks or registered trademarks of Ricoh Co., Ltd., in the United States, other countries, or both: InfoPrint, Intelligent Printer Datastream, IPDS and the InfoPrint logo.

These terms are trademarks or registered trademarks of International Business Machines Corporation in the United States, other countries, or both: IBM and the IBM logo.

Adobe, the Adobe logo, PostScript, Postscript 3, and the PostScript logo are either registered trademarks or trademarks of Adobe Systems Incorporated in the United States and/or other countries.

Other company, product, or service names may be trademarks or service marks of others.

- ¹ Exact speed varies depending on document complexity, system configuration, software application, driver and printer state.
- ² InfoPrint Solutions Company does not recommend printing this monthly maximum on a consistent basis.
- ³ Options are subject to availability. Optional accessories may have co-requisite and/or pre-requisite limitations. Contact your InfoPrint Solutions sales representative for details.